



# FLORIDA INSTRUCTIONAL CONTINUITY PLAN (ICP)

## 2021-2022

# Network Submission

Must list charter schools under Legal Entity (Governing Board) on next page

**Local Education Agency**

St. Lucie Public Schools

**Legal Entity (Governing Board)**

Somerset Academy, Inc.

**Submitted by**

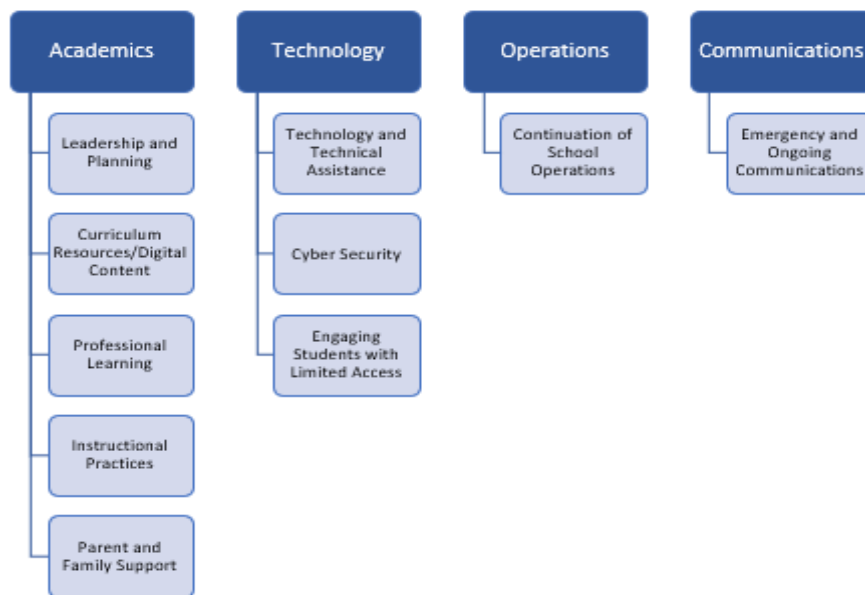
Erika Rains & Joann Roach



The Florida Department of Education (FDOE) developed an Instructional Continuity Framework that consists of ten components outlined below, each of which has a series of development activities. These components will serve as guidance resources for each Florida Local Educational Agency (LEA) to develop and refine their own Instructional Continuity Plan (ICP). LEAs and charter schools are encouraged to review the content in this portal and use it to support their ICP development. For questions about this information or the process of developing your ICP, please reach out to [instructionalcontinuityplan@fldoe.org](mailto:instructionalcontinuityplan@fldoe.org).

### ICP Framework Components

The graphic below illustrates ten ICP components, each of which falls under one of the four broader categories at the top of the graphic: Academics, Technology, Operations and Communications.



The ICP Guidance document provides an accompanying general description of each component and a checklist of items that should be represented in the ICP. This tool is provided to LEAs and charter schools to assist in designing and refining ICPs across the state of Florida.

For each component, LEAs and charter schools will create and insert their plan in the designated fields for the corresponding ICP components. LEAs and charter schools may also include supporting documents for each component if necessary.

LEAs and charter schools will use this document to create their plans and, upon completion, transfer the information to the ICP Portal between 9/24/21 and 9/30/21.

Charter School organizations who are not considered one of Florida's LEAs will use this ICP template to create and submit their plans to their LEA.

## ACADEMICS

### Component 1: Leadership and Planning

The language in the ICP should: Specify LEA or charter school personnel who will serve on a cross-functional planning team; Identify desired outcomes or goals of the ICP; Define the critical success factors (CSFs) that determine achievement of the ICP desired outcomes or goals; Develop the action plans needed to address the CSFs, including the protocols and execution steps for the ICP; Develop a process for evaluating the effectiveness of the ICP.

## Component 2: Curriculum Resources/Digital Content

The language in the ICP should: Reaffirm desired outcomes, goals, and instructional strategies of the remote learning program; Confirm LMS providers and if selecting a new provider, schedule product demonstrations; Delegate a cross-functional team to monitor the performance of the LMS and make recommendations for improvements or modifications; Provide ongoing training and professional learning ensuring new hires are included; Allow planning time (two to three months) for teachers and instructional staff to become familiar with digital content to be used within the LMS, including appropriate instructional supports, e.g., coaching.

## Component 3: Professional Learning

The language in the ICP should: Provide leaders and instructional staff multiple survey opportunities to determine actual needs regarding professional learning; Arrange time for professional learning opportunities for school leaders and staff, keeping in mind best practices for adult learners; Provide for implementation of professional learning for educational staff; Assess the effectiveness of professional learning efforts to continuously improve the process and provide relevant opportunities in the future.

## Component 4: Instructional Practices

The language in the ICP should: Identify needs of educators relative to online and hybrid teaching experience and expertise; Determine which teachers have extensive background in these delivery models, and which will need more help; Develop guidance, resources, and training on the best practices for distance/hybrid education delivery for those who need help onboarding to these practices; Implement professional learning about best practices for hybrid teaching for educational staff; Assess the effectiveness of delivery methods and alter strategies as needed to engage all students.

## Component 5: Parent and Family Support

The language in the ICP should: Identify the household technology capabilities and needs of students and their families; Establish effective two-way lines of communications with parents and families of students using a variety of media; Provide guidance and direction to students, parents, and families on how to create distraction-free learning environments at home that are conducive to learning; Develop and communicate to staff and parents/families the protocols for providing special education services and accommodations for students in need; Develop a plan to conduct regular outreach and wellness checks to help support the health and safety of students and their families; Develop a plan to ensure that the needs of special student populations, e.g., ESE, ELL, homeless, etc., are being supported in keeping with the requirements of IEPs and other educational specification documents.



## TECHNOLOGY

### Component 6: Technology and Technical Support

The language in the ICP should: Identify the technology staff members who will be key to the ICP planning process; Determine the robustness of the technology infrastructure for delivering synchronous and asynchronous instruction with crashes or other service disruptions, and upgrade as needed; Determine which students will need devices (if the LEA or charter school does not already have a 1:1 initiative); Survey students and families to determine which are in need of internet access and provide this access as needed; Provide devices that will support the digital curriculum and also complies with Free and Appropriate Public Education (FAPE); Identify and implement a web content filtering solution for all devices used by students and staff; Identify roles needed to support technology in a remote learning model and reallocate personnel accordingly.

## Component 7: Cyber Security

The language in the ICP should: Identify recommended national and state cyber security framework standards to be adopted by LEAs and charter schools; Include a business continuity plan tailored to the LEA or charter school operations; Include an incident response plan tailored to the LEA or charter school operations; Stipulate all cyber security-related policies and procedures aimed at safeguarding the entire LEA or charter school information system and IT infrastructure; Include an executive summary of the LEA's or charter school's current security posture; Include current Plan of Actions and Milestones for cyber security improvements to maximize ICP effectiveness.

## Component 8: Engaging Students with Limited Access

The language in the ICP should: Specify a team of service providers and determine a point person for communication with families about the efforts to provide education and supports for their child; Develop a plan to communicate early and often with students and parents to identify needs and ensure supports; Ensure that LEA leadership is engaged with special education service providers to deliver needed supports and resources to educators, learners and families; Research and implement best practices in online special education.

## OPERATIONS

### Component 9: Continuation of School Operations

The language in the ICP should: Identify the facets of school operations that are impacted by extended school closures along with the essential personnel needed to support learning continuity through remote teaching and learning; Identify and communicate expectations of charter school or LEA staff related to schedules and work performance during school closures; Develop and communicate an execution plan to provide food services to students and families in need during school closures; Develop and execute a plan to provide special education services and accommodations to students in need during school closures; Conduct outreach to community organizations to provide comprehensive support to students and families during school closures.

# COMMUNICATIONS

## Component 10: Emergency and Ongoing Communications

The language in the ICP should: Identify stakeholder groups within the school community along with the appropriate communication channels for each group; Clarify roles and responsibilities of school personnel assigned to communicate with stakeholder groups; Define the scope of communications to be sent to stakeholders along with a schedule for such communications to ensure coordination; Publish guidance for stakeholders and ICPs on the charter school or LEA website leading up to and throughout the duration of extended school closures.